



SHEAVE ASSEMBLY

MODEL NO. 16567-A FOR UNFAIRED CABLE



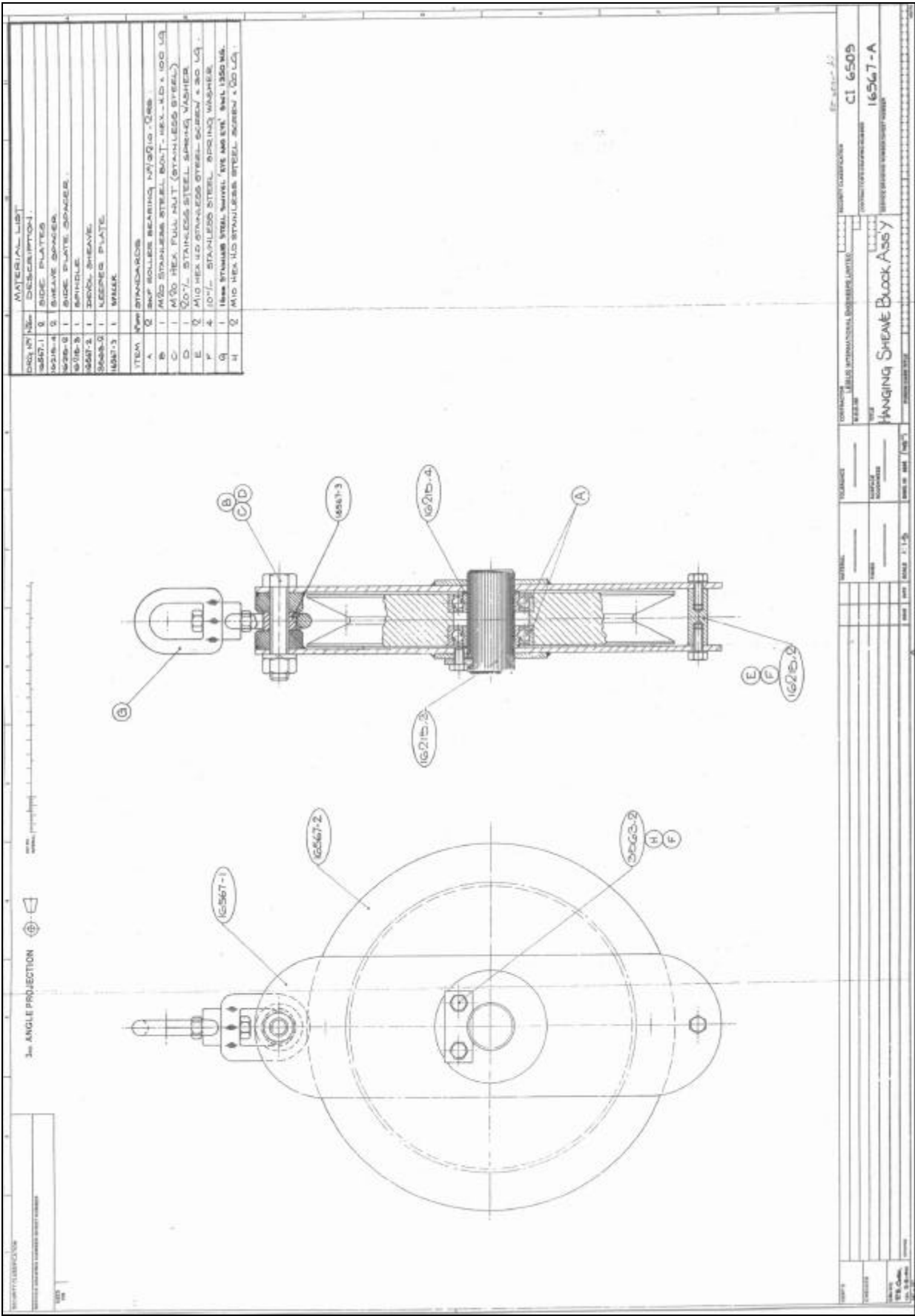
**Chelsea
Technologies
Group**
55 Central Avenue
West Molesey
Surrey KT8 2QZ
United Kingdom
Tel: +44 (0)20 8481 9000
Fax: +44 (0)20 8941 9319
sales@chelsea.co.uk
www.chelsea.co.uk

'A' frame hanging sheave assembly to suit Rochester 7-H-314-AXX cable

Sheave Model No. 16567-A is 60cm diameter and provides the required minimum bend diameter dictated by the cable specification (48.5cm) and is designed for use with unfaired cable. It weighs approximately 40kg. A side latch is provided to allow fitment of the cable to the sheave without disturbing cable terminations. The assembly is fabricated from stainless steel and high density nylon, having good corrosion resistance properties.

Inner Diameter:		48.5cm
Weight:		40 kg

SHEAVE ASSEMBLY MODEL NO 16567-A FOR UNFAIRED CABLE



MATERIAL LIST	
QTY	DESCRIPTION
16567-1	0 SIDE PLATES
16567-2	0 SIDE PLATES
16567-3	1 ROLLER BEARING
16567-4	1 ROLLER BEARING
16567-5	1 ROLLER BEARING
16567-6	1 ROLLER BEARING
16567-7	1 ROLLER BEARING
16567-8	1 ROLLER BEARING
16567-9	1 ROLLER BEARING
16567-10	1 ROLLER BEARING

ITEM		QTY	DESCRIPTION
A	16567-1	0	16567-1
B	16567-2	0	16567-2
C	16567-3	1	16567-3
D	16567-4	1	16567-4
E	16567-5	1	16567-5
F	16567-6	1	16567-6
G	16567-7	1	16567-7
H	16567-8	1	16567-8

DATE	11/15/11	SCALE	1:1
DESIGNED BY	16567-A	CHECKED BY	16567-A
DRAWING TITLE		DRAWING NUMBER	
HANGING SHEAVE BLOCK ASSY		16567-A	
REVISIONS		APPROVED	
1. REV. 11/15/11		[Signature]	