



# SHEAVE ASSEMBLY



MODEL NO. 16391-A FOR FAIRED CABLE



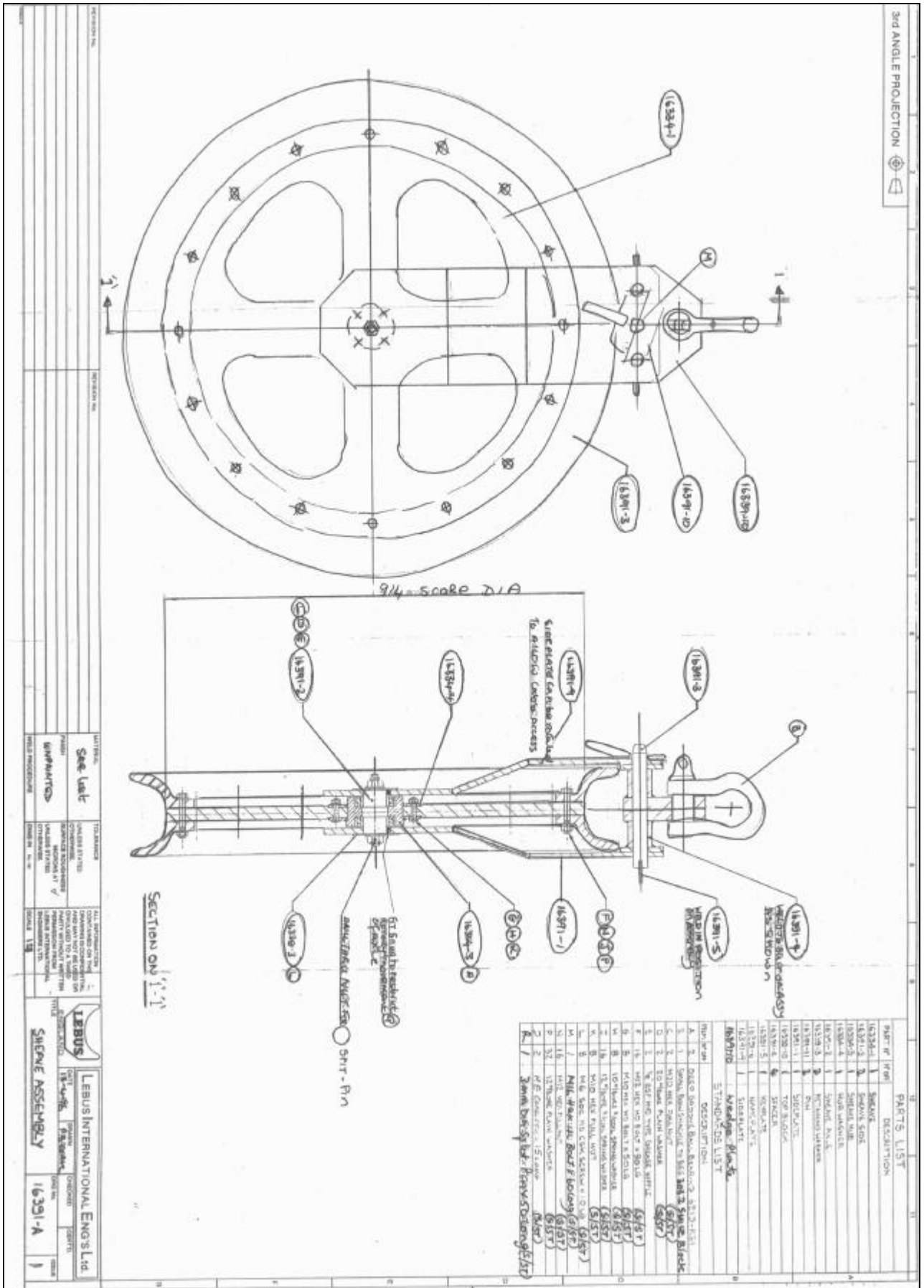
**Chelsea  
Technologies  
Group**  
55 Central Avenue  
West Molesey  
Surrey KT8 2QZ  
United Kingdom  
Tel: +44 (0)20 8481 9000  
Fax: +44 (0)20 8941 9319  
sales@chelsea.co.uk  
www.chelsea.co.uk

**'A' frame hanging sheave assembly to suit Rochester 7-H-314-AXX cable fitted with Indal Fairing.**

Sheave Assembly 16391-A is a specially developed towing block assembly, of 36" inner diameter to suit the bend radius of the tow cable/fairing combination used with AQUA<sup>shuttle</sup>, Nu-Shuttles and SeaSoars. The tow block assembly incorporates a proven wide throat section, which ensures that the fairing passes over the sheave without damage. The assembly is fabricated from stainless steel and high-density nylon, having good corrosion resistance properties.

<b>Inner Diameter:</b>	36" (Ø 914mm)
<b>Weight:</b>	150 kg

# SHEAVE ASSEMBLY MODEL NO 16391-A FOR FAIRED CABLE



3rd ANGLE PROJECTION

PARTS LIST

Part No	DESCRIPTION
16391-1	SHEAVE
16391-2	SHEAVE SADDLE
16391-3	SHEAVE WIRE
16391-4	WIRE WADDER
16391-5	SHEAVE PIN
16391-6	WIRE WADDER
16391-7	WIRE WADDER
16391-8	WIRE WADDER
16391-9	WIRE WADDER
16391-10	WIRE WADDER
16391-11	WIRE WADDER

<p>TECHNICAL DATA</p> <p>DESIGNER: [ ]</p> <p>CHECKED: [ ]</p> <p>DATE: [ ]</p>	<p>MANUFACTURE</p> <p>16391-A</p>	<p>LEIBUS INTERNATIONAL ENGS LTD</p> <p>16391-A</p>
---	-----------------------------------	---